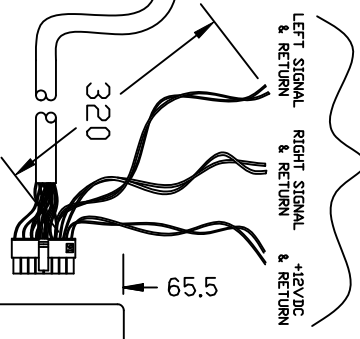
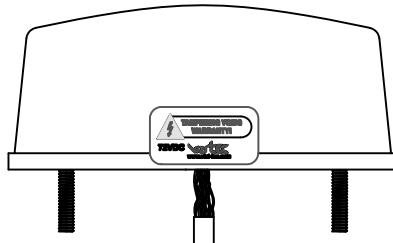
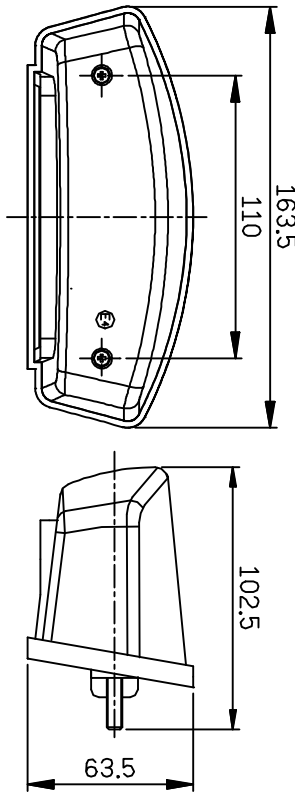
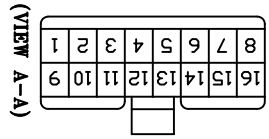
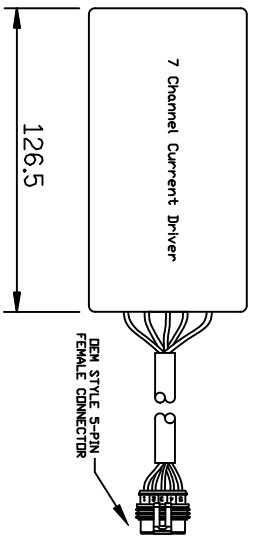


6 5 4 3 2 1



(WIRE COLOR CODE)		
POSITION #	DESC.	COLOR
16	+12 VDC (EXTERNAL)	YELLOW
15	RIGHT SIG (EXTERNAL)	BLUE
14	LEFT SIG (EXTERNAL)	GREEN
9, 10, 11, 12, 13	FACTORY WIRING	N/A
6, 7, 8	GROUND (EXTERNAL)	BLACK
1, 2, 3, 4, 5	FACTORY WIRING	N/A



OPTICAL SPECS:

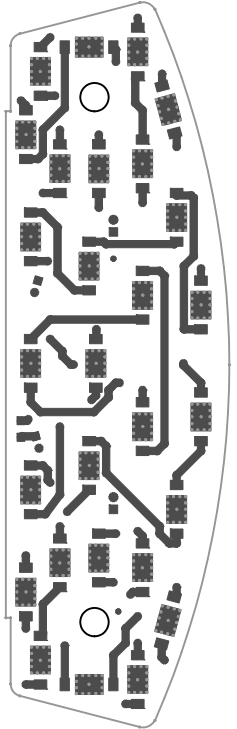
RED LED: 20 EACH
 DOMINANT WAVELENGTH: 620 - 630 NM
 PEAK EMISSION WAVELENGTH: 625 NM
 LUMINOUS FLUX: 150-180 LM per Device
 LUMINOUS INTENSITY: 41 - 48 CD per Device

AMBER/YELLOW LED: 8 EACH
 DOMINANT WAVELENGTH: 582 - 595 NM
 PEAK EMISSION WAVELENGTH: 595 NM
 LUMINOUS FLUX: 130-150 LM per Device
 LUMINOUS INTENSITY: 37 - 42 CD per Device

VIEWING ANGLE (2θ 1/2) : 150° ±5° BIN CODE
 90% IS THE OFF-AXIS AT WHICH THE LUMINOUS INTENSITY IS HALF THE AXIAL LUMINOUS INTENSITY

GLASS 1 LED PRODUCT

THIS PRODUCT USES LEADS THAT ARE INHERENTLY CLASS 1



ELECTRICAL SPECS:

THE SUPANOVA (HS-1000000) LED BOARD IS A SOLID STATE DEVICE. CARE SHOULD BE TAKEN DURING INSTALLATION TO AVOID ESD DAMAGE.

STORAGE TEMPERATURE: -40°C TO +105°C (-40°F TO 221°F)
 OPERATING AMBIENT TEMPERATURE: -40°C TO +85°C (-40°F TO 185°F)
 INPUT VOLTAGE: 9VDC TO 15VDC (NDM, 12VDC)
 IEC 529 IP 6.4 STANDARDS
 QUIESCENT CURRENT: 0.40 - 5.35 AMPS TYP
 WIRE SIZE: 18 AWG



CAUTION
ELECTROSTATIC DISCHARGE SENSITIVE

THIS DRAWING CONTAINS PROPRIETARY INFORMATION AND IS NOT TO BE USED OR REPRODUCED WITHOUT THE WRITTEN PERMISSION OF THE ENGINEERING CORPORATION. Copyright © VATEC 2008				SIGNATURE		DATE
2 P/LC	UNLESS OTHERWISE NOTED	3 P/LC	ANGLE	DETAIL	BIT	10/10/08
±.XX		±.XX		APP'D		
REMOVE DIMS & SWAP DIMS			APP'D			
SURFACE FINISH			XX	THIRD ANGLE PROJECTION		
DIMENSIONS ARE IN MILLIMETERS				SCALE N/A		
SIZE DRAWING NUMBER				SHEET 1 OF 1		
20101015				REV AA		
SUPANOVA(DUCAT-1M)				VATEC Technologies www.vatec.com		
SUPANOVA-HSI						

6 5 4 3 2 1

A

B

C