



## SB-MH900e Installation

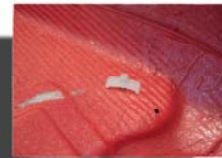
Before beginning the installation verify the operation of the brake light.



Questions?  
Goto [www.vizi-tec.com](http://www.vizi-tec.com)

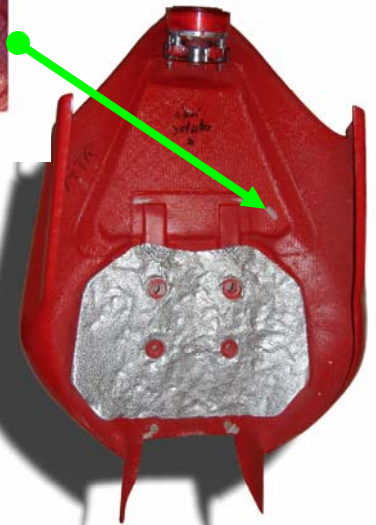
### STEP 1:

Remove the tail section per owner's manual to expose underneath.



### STEP 2:

Remove the stock cable underneath the tail section by disconnecting the 3 connectors from the rear lamp module and cutting the tie-wrap. **(DO NOT CUT OR REMOVE THE BASE OF THE STOCK TIE-WRAP. THIS WILL BE USED TO HOLD THE SB-MH900e ASSEMBLY LATER!)**



### STEP 3:

Attached the "output" wire (White, Yellow and Black) of the SB-MH900e to the lamp module as shown. (See Datasheet for more information)

As shown, secure the SB-MH900e to the tail section using the supplied tie-wrap and double-side tape. Trim off access tie-wrap and re-install tail section on motorcycle. Test for functionality. Done!

